

PROPOSAL FOR A MOVING FRAME

LOLA MARTINS-COIGNUS
EMILIE TERLINDEN

OPENINGS

Friday, March 22 and 29 3pm - 3am

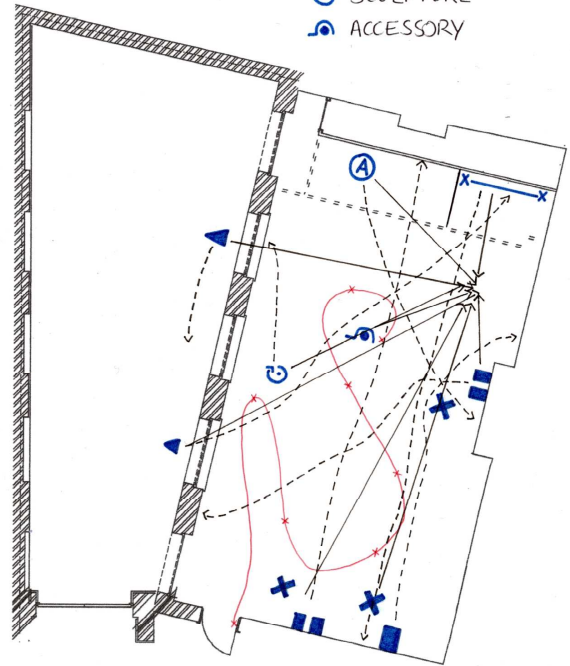
Friday, April 5 3pm - 3am

Moonens Foundation

Philippe de Champagne, 50 1000 Brussels

Exhibition completed with the support of the Moonens Foundation

- Ⓐ AIDE
- ✕ VIDEO INSTALLATION 1
- ▲ VIDEO INSTALLATION 2 & 3
- OIL ON CANVAS
- ✕ PACKAGING
- Ⓢ SCULPTURE
- Ⓐ ACCESSORY



A *Moving Frame* is a mathematical term used to measure the space from the observer's point of view and an object. The frame of reference moves with the viewer along his trajectory noticing his every movement and change of behaviour.

By borrowing the system of this theory, *Proposal for a Moving Frame* wants to circumvent the idea of a fixed exhibition space to think the fragile insertion of objects in a context, and in doing so, to highlight the history of entities at times active, slow or immobile.

Along three ritual openings of twelve hours each, the assembly of the pieces will constitute three settings in which the movement of objects and viewers will be dependent on the moving frame.